



PODIUM
PERRY LAKES

Step up to the Western Suburbs lifestyle.




PODIUM
PERRY LAKES

A big step forward.

Fifty years ago, Perry Lakes resonated to the sounds of thousands of voices as eager crowds cheered the athletes of the 1962 Commonwealth and Empire Games.

And now, there's a different reason to celebrate. This beautiful area of parklands and lakes, nestled between the city and the coast, is undergoing a transformation. The running tracks and the athletes are making way for one of the most important new residential developments in Perth's Western Suburbs for many years and you have a window of opportunity to participate. This is truly a location like no other.



A very familiar address.

Perry Lakes is a Perth icon. Just 7km from the Perth CBD, this pocket of parkland is perfectly placed. The neighbouring established suburbs of Claremont, Cottesloe, Swanbourne, City Beach, Floreat and Subiaco are all just five minutes away. And yet you're surrounded by natural bushland.

Trains, buses and major roads are all within easy reach. Yet all you'll hear from your balcony is the native birds.

There are dozens of excellent restaurants, bars and hotels and Perth's major shopping areas within a ten minute radius. But when you arrive home, it will be to the humming of cicadas and the croaks of Pobblebonk frogs.

This is Western Suburbs living at its very best.



Swanbourne Beach

Cottesloe Golf Club

City Beach

Floreat Beach

International School

Wembley Golf Course

Newman College

Quarry Amphitheatre

Bold Park

Perry Lakes Reserve

Floreat Forum

Reabold Hill

Challenge Stadium

Podium Perry Lakes

John XXIII College

Scotch College

Lake Claremont Golf Club

Claremont Showgrounds

Claremont Quarter

Methodist Ladies College

Christchurch Grammar School

Nature is your neighbour.

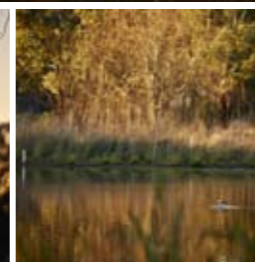
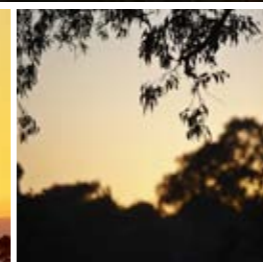
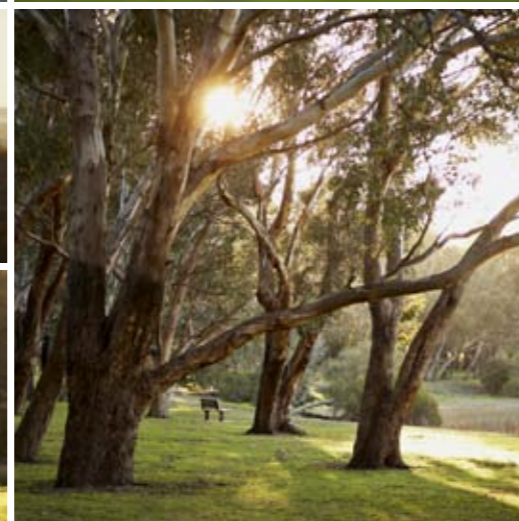
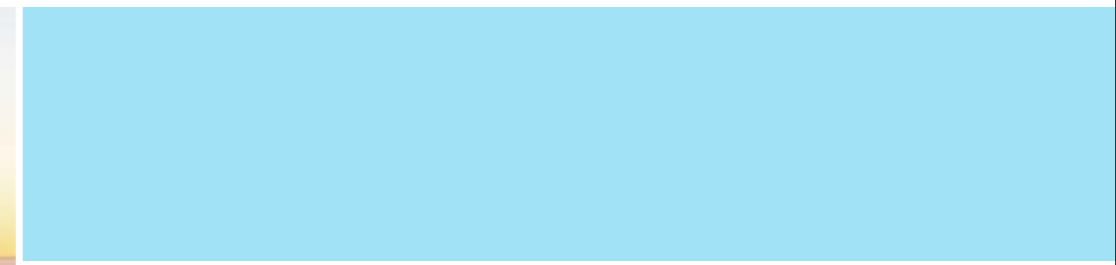
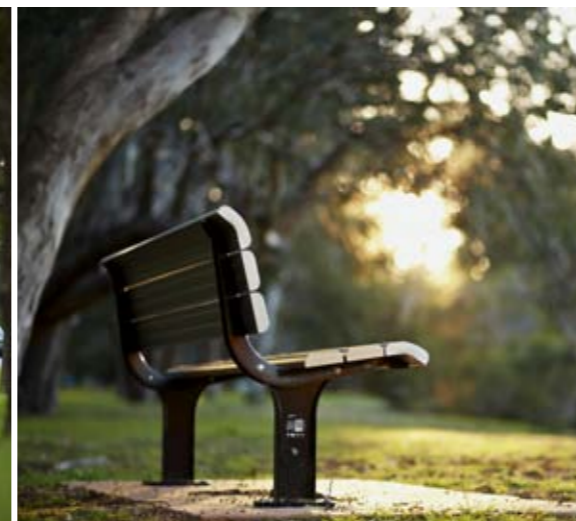
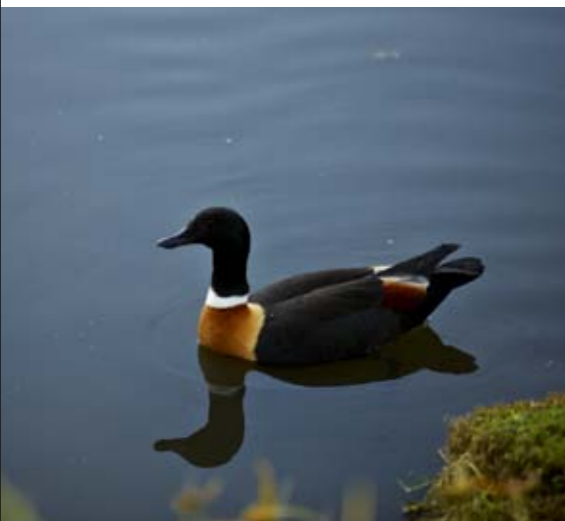


Podium is in a unique parkland setting. On your doorstep is the 80 hectare Perry Lakes Reserve with its 13 hectare conservation wetland.

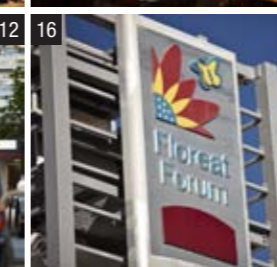
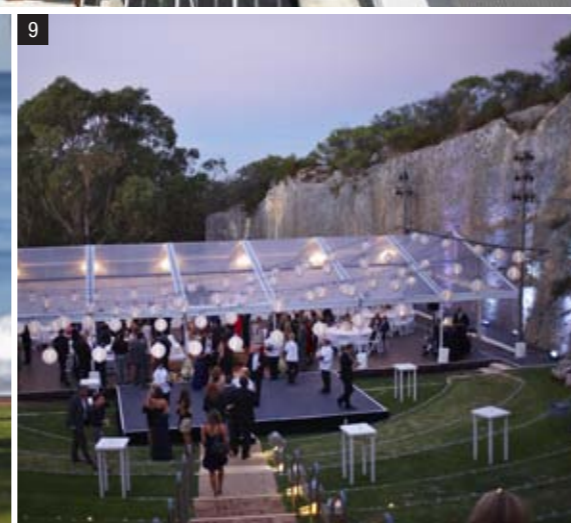
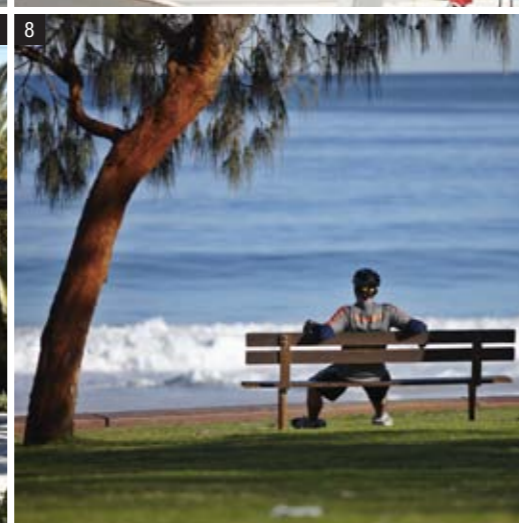
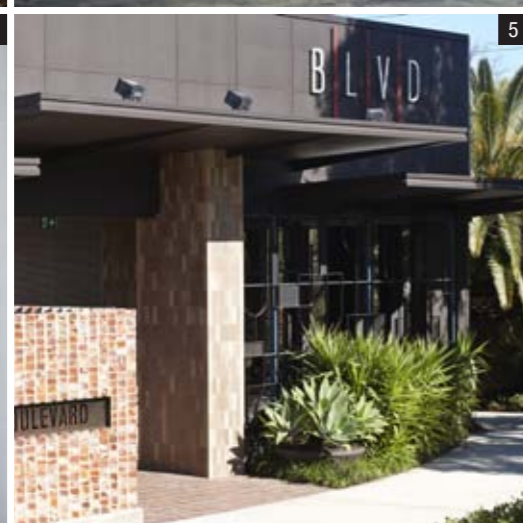
Immediately to the west is the natural wonderland of Bold Park; a huge 437 hectare bushland reserve with an extraordinary biodiversity. The park is home to over 1,000 species of birds, animals and plants and has 15 kms of well-maintained walking trails.

To the north is Reabold Hill with sweeping views of the Indian Ocean and Perth city.

This protected natural setting is ideal for those who enjoy walks, cycling and a healthy, active lifestyle. Relaxation is always just outside your front door.



Everything's already on your doorstep.



The beauty of living in a well-established area is that everything you need is close by. There's excellent shopping at nearby Floreat Forum, Rokeby Road and the cosmopolitan chic Claremont Quarter. There are restaurants and cafes galore within ten minutes of your front door. And when it's time to relax, there are wonderful beaches - and Lifesaving Clubs at City Beach, Floreat, Swanbourne and Cottesloe.

As you might expect, there's no shortage of sporting facilities around Perry Lakes. You have a choice of Cottesloe, Lake Claremont and Wembley golf courses, tennis clubs and bowls clubs in your neighbouring area. There are also nearby facilities for fans of soccer, baseball, basketball, croquet, swimming, netball, athletics, softball, football, rugby and hockey.

Many of Perth's top primary and secondary schools are also close by including the colleges of John XXIII, Newman and Scotch, as well as the International School of Western Australia.

The Quarry Amphitheatre and Challenge Stadium are your local venues for arts, sports and cultural events.

- | | |
|-------------------------|------------------------------------|
| 1. Scotch College | 11. Claremont Quarter |
| 2. Clancy's City Beach | 12. Rokeby Road Subiaco |
| 3. Claremont Quarter | 13. John XXIII College |
| 4. Swanbourne Beach | 14. Chez Jean-Claude Patisserie |
| 5. The Boulevard Hotel | 15. Le Bistro Des Artistes Subiaco |
| 6. City Beach | 16. Floreat Forum |
| 7. WA Basketball Centre | 17. Local public transport |
| 8. Floreat Beach | 18. Cottesloe Golf Club |
| 9. Quarry Amphitheatre | 19. Cottesloe Beach |
| 10. Wembley Golf Course | |

Enjoy
the latest
in modern
living.





Podium Central Two Level Townhouses Artist Impression



Podium West Three Level Townhouses Artist Impression

Classic,
timeless
design.



Terrace Three Level Townhouse Artist Impression

Podium offers you a choice of two or three storey townhouses designed by award-winning architects Cameron Chisholm Nicol. They have taken their inspiration from the then cutting-edge design of the original Perry Lakes stadium and athletes village and created a Modernist-influenced design for today's lifestyles.

Design guidelines for the Perry Lakes precinct were set to exacting standards by Landcorp, ensuring all development is of a high standard, and in harmony with its surroundings. So your investment - and lifestyle - are both protected.

Inside every Podium townhouse, you'll find the very best of everything. High quality finishes in every house, including custom-made joinery, polished Travertine or timber flooring and pure wool carpets.

The modern kitchen features the latest Smeg 900mm wide appliances and easy-care reconstituted stone benchtops.

The bathrooms are fully tiled and feature semi-frameless glass shower screens and stylish European designed tapware.

The contemporary yet neutral colour palette lets you easily add your own design and style touches.

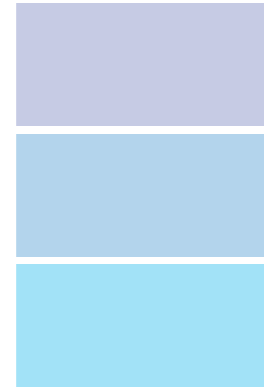
All townhouses are air-conditioned, have a voice intercom and two secure car bays.

Over half of the three storey Podium townhouses are designed to accommodate a lift. You can choose this option at the time of purchase, or add a lift yourself in the future.

The very best of everything.



Living Two Level Townhouse Artist Impression



Dining Three Level Townhouse Artist Impression



Courtyard Two Level Townhouse Artist Impression



Dining Three Level Townhouse Artist Impression

Perfect for entertaining.

Podium's architects have taken their lead from today's West Australian lifestyle and designed a very contemporary space which seamlessly integrates the inside and outdoor living areas.

In summer, the full-height glass panels in your three storey townhouse slide back to create an environment where inside and outside become one huge entertaining area.

And in winter, after drinks on the balcony, your guests can enjoy dinner in the warmth of a generous-sized dining area.

This practical seamless living is visually enhanced by the use of matching flooring both inside and out. In the three storey homes, this is beautiful polished Travertine stone.

The two storey homes feature polished timber inside complemented by exterior tiles carefully selected by interior designers to create a wonderful feeling of continuous, connected space.



Podium West Two Level Townhouses Artist Impression



Bedroom Three Level Townhouse Artist Impression

Take the next step.

Podium has been designed to suit a variety of lifestyles. For those living in rambling, unmanageable homes in the neighbouring suburbs, it's the perfect place to downsize, yet still live in familiar surroundings close to friends and the places you know.

For those always wanting to live in the Western Suburbs, but who thought the area out of their reach, Podium is an elegant and affordable option.

And for those who like to travel, Podium provides the perfect secure lock-up-and-leave solution.



Bathroom Two Level Townhouse Artist Impression





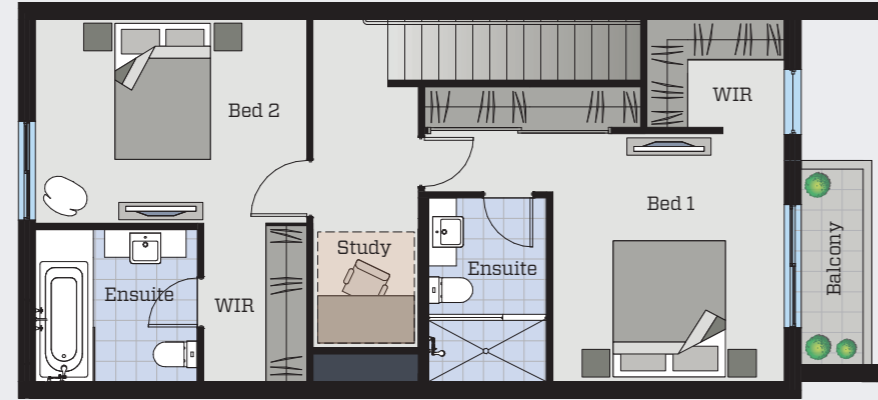
Podium Perry Lakes Onsite Sales Office
 Stadium Drive (cnr Humanity Avenue)
 Floreat, Western Australia 6014.

- 2 Level Townhouses
- 3 Level Townhouses

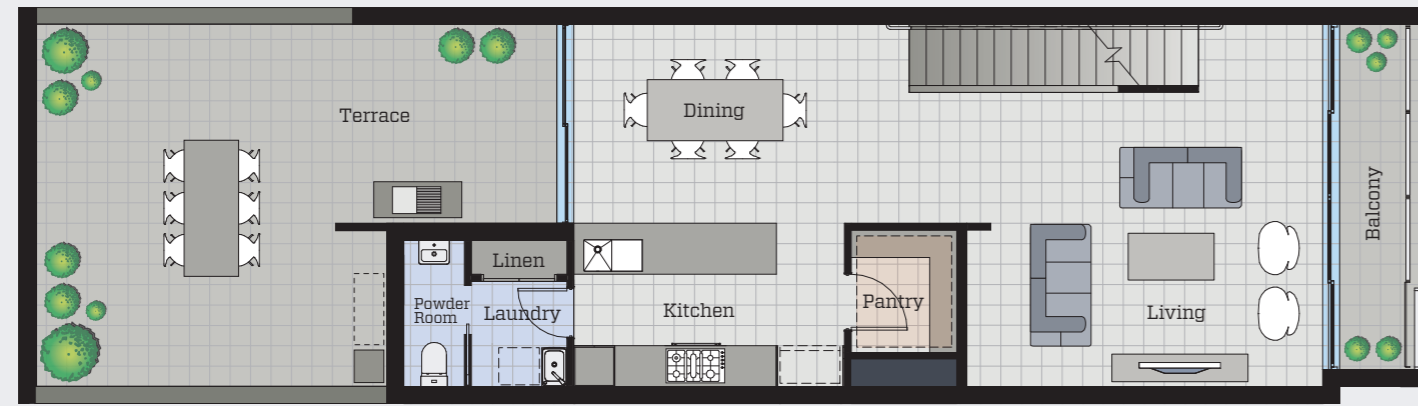
Choose your new address.



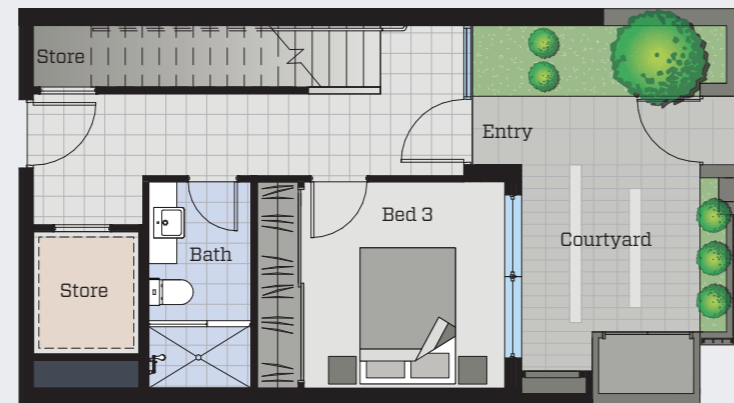
House numbers indicated are architectural numbers.



Second Floor



First Floor



Ground Floor

Townhouse 1
Podium West

Internal	155m ²
GF Courtyard	16m ²
1F Terrace	35m ²
1F Balcony	5m ²
2F Balcony	3m ²
2 Carbays	27m ²
Total Area	241m²

Designed to suit
your lifestyle.



Ground Floor



First Floor

Townhouse 11
Podium West

Internal	133m ²
Courtyard	26m ²
Front Garden Bed	6m ²
External Store	3m ²
2 Carbays	28m ²
Total Area	196m²

Typical 2 Level Townhouse

Typical 3 Level Townhouse

Dimensions and areas are approximate only. Loose furniture, white goods, pendant lights and planters are not included. Extent of floor finish may vary. Variations in design can occur in order to comply with the dictates of good construction practice. Prospective purchasers should rely on their own enquiries and should refer to the plans, terms and conditions contained in the Contract of Sale.

The people behind Podium.



Pearson & Victoria
Brunswick Victoria



Sovereign Place Apartments
East Perth Western Australia



Sovereign Place Townhouses
East Perth Western Australia



Lake Reflections
Joondalup Western Australia

TRG Properties

TRG Properties Pty Ltd is part of the Transcontinental Group of Companies founded in 1981. Based in Perth, Western Australia it has established a long and enviable reputation for excellence in property development over the last 30 years.

TRG Properties has a long list of successfully completed projects comprising retail, commercial office, englobo land sub-divisions and predominantly residential development with total end values in the billions of dollars and spread over Western Australia, Victoria and Queensland. TRG Properties is clearly an experienced developer with proven expertise and a well documented track record.

TRG Properties is a member of the Green Building Council of Australia.

trgproperties.com.au



Marlston Quay
Bunbury Western Australia



Ocean Edge Apartments
Port Coogee Western Australia



Madison & Westside
Ellenbrook Western Australia



Juniper Apartments
Midland Western Australia

Cameron Chisholm Nicol Architects

Cameron Chisholm Nicol are the award-winning architects behind Perry Lakes. With a history stretching back more than one hundred years, the practice has a made a significant contribution to Perth's architectural fabric. Committed to design excellence, their extensive portfolio of high-quality residential and resort projects combine creativity with sustainable design philosophies to deliver inspiring built environments which set new benchmarks in contemporary living.

The history and cultural context of the Perry Lakes site have guided the architects in their approach, drawing on the modernist aesthetic of the original sporting complex to create a selection of townhouses with a distinctive identity and sense of place. Passive solar design, cross ventilation and natural lighting ensure high levels of comfort and energy efficiency. With considered attention to practicality, from space planning down to the smallest details, the Perry Lakes townhouses represent design excellence on every level.

With a philosophy centred on bringing people and place together, CCN has combined materials and finishes of the highest quality with sustainable design principles to create a vibrant community of contemporary living spaces.

ccnwa.com.au

A Podium finish.





podiumperrylakes.com.au

Dimensions and areas are approximate only. Loose furniture, white goods, pendant lights and planters are not included. Extent of floor finish may vary. Variations in design can occur in order to comply with the dictates of good construction practice. Prospective purchasers should rely on their own enquiries and should refer to the plans, terms and conditions contained in the Contract of Sale.



podiumperrylakes.com.au

Sales Enquiries
Sven Robertson 0419 984 368
Realmark West 08 6382 6100
sven@realmark.com.au

