

FOR SALE

10/53 East Parkway, Lightsview

Apartment 10
Pod 7

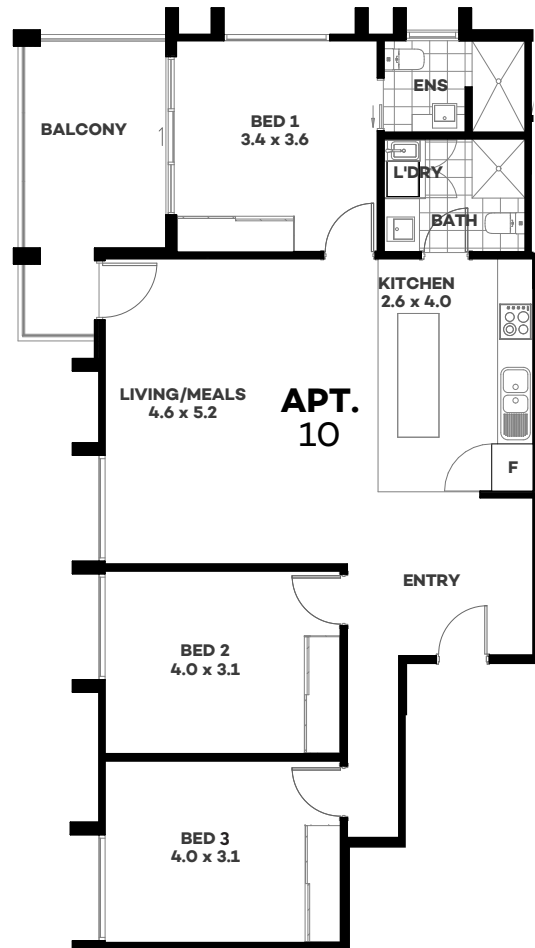
3  | 2  | 1 



Pod 7 offers stunning external design and spacious interiors, where you can enjoy the simplicity of apartment living within a vibrant community atmosphere.

Apartment 10 is big on space, with a stunning open plan kitchen, living, dining area being the central gathering area that separates the private master suite from the second and third bedrooms. Enjoy vast views and balmy nights from your private balcony, with dual access from inside.

Residents of Pod 7 will enjoy having the best of Waterford only moments away. Just beyond their doorstep they will find feature lakes, tennis courts, walking trails and all the high-quality homes that Waterford is so famous for. And only a little further away lies another brand new premium precinct, Waterford Gardens.



| | |
|--------------------------|-------------------------|
| LIVING (approx.) | 100m² |
| BALCONY (approx.) | 11m² |
| TOTAL (approx.) | 111m² |

FEATURES

- Electrical upgrade package included
- Reverse-cycle air conditioning to master bedroom and living area
- Tiles to wet areas and balcony
- Quality carpet to bedrooms
- Lift access, intercom and alarm system
- 2.7m high ceilings
- Mirrored sliding door wardrobes to all bedrooms
- Quality stainless steel kitchen appliances (electric oven, cooktop, retractable range hood and dishwasher)
- High speed fibre optic connection
- Lockable storage cage
- 1 garage carpark

This completed apartment is available for inspection. Contact us today.

For more information contact the Lightsview Sales and Information Centre
155 East Parkway, Lightsview

Open Monday to Friday 9am - 5pm, Saturday and Sunday 12pm - 5pm

8261 1888 | lightsviewapartments.com.au

Whilst all care has been taken in the preparation of this material, no responsibility is taken for errors or omissions and details may be subject to change. Intending purchasers should not rely on statements or representations and are advised to make their own enquiries to satisfy themselves in all respects. Images are for illustration purposes only and furniture is excluded.