

for lease

203 Fullarton Road, Eastwood

314sq m approx. first floor

Stellar office opportunity



- High corporate exposure with naming rights available
- On site under-croft car parking
- Significant natural light with views of the parklands
- Less than 2.0km from the CBD
- End of trip shower facilities
- Ample power and optic fibre to the building
- Shops, cafes and amenities at the Frewville Shopping Centre and Glen Osmond Road only a short walk
- Established corporate precinct

Director
Adam Hartley
0419 174 764
ahartley@savills.com.au

RLA 1786

savills.com.au

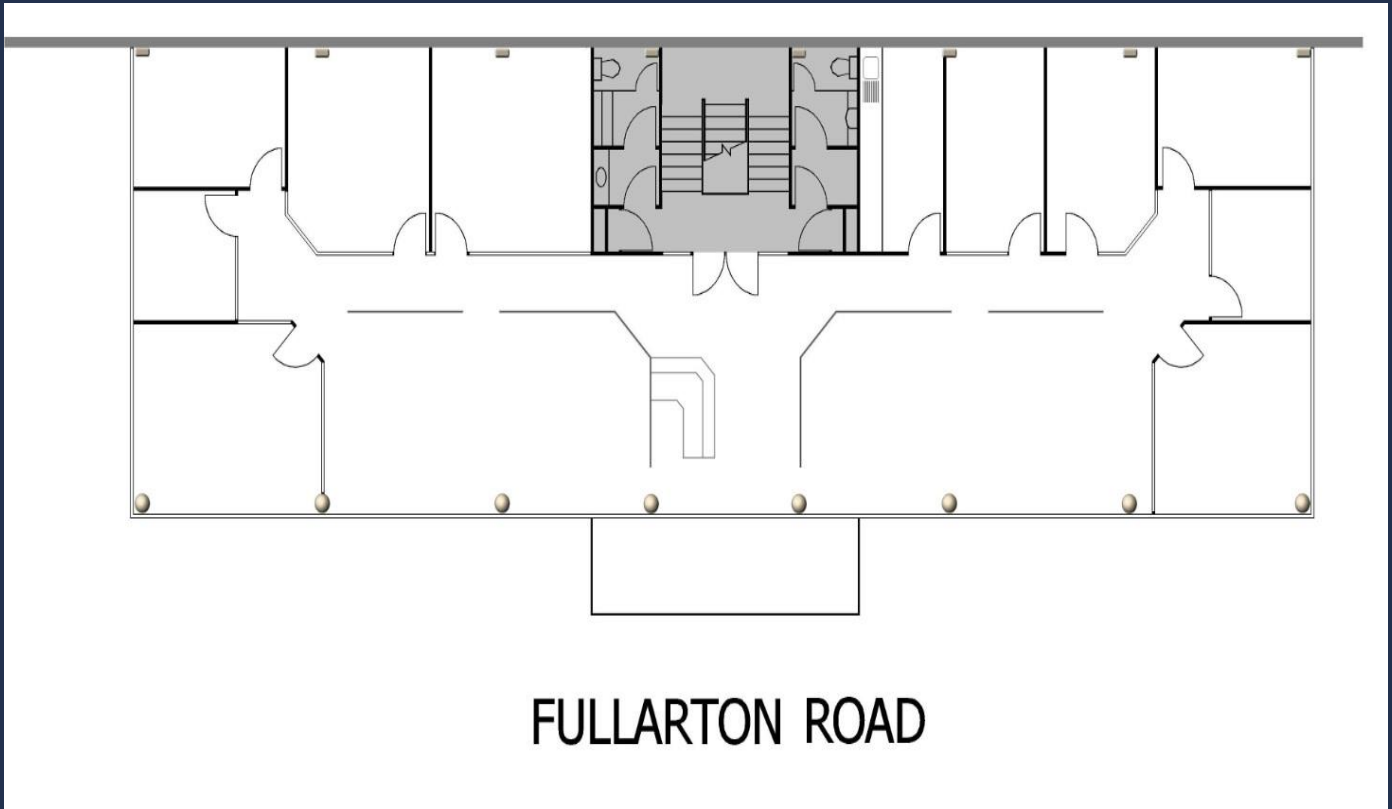
08 8237 5000

The information in this brochure is for marketing purposes only. It has, except as otherwise indicated, been supplied to us by or on behalf of the vendor. We have not formed any opinion as to its truth or falsity. We therefore recommend that potential purchaser make their own investigations and inquiries. The information in this brochure does not form part of any contract

savills

314sq m for lease, first floor

For Lease 203 Fullarton Road, Eastwood



Director
Adam Hartley **0419 174 764**
ahartley@savills.com.au

Level 2
50 Hindmarsh Square
Adelaide SA 5000

RLA 1786
P 08 8237 5000
F 08 8237 5099

Available Space

314sq m first floor - \$380sq m Gross p.a. plus GST (additional costs include lessee's proportion of increases in outgoings over base year).

Car parking - up to 10 available at \$85 per park per month plus GST

Existing Floor Plan

**Custom Floor Plans Designed To Your Specification Available Upon Request*

savills.com.au

The information in this brochure is for marketing purposes only. It has, except as otherwise indicated, been supplied to us by or on behalf of the vendor. We have not formed any opinion as to its truth or falsity. We therefore recommend that potential purchaser make their own investigations and inquiries. The information in this brochure does not form part of any contract.

savills