



\$2,591,000[^]



/ NORTH KELLYVILLE | LOT 3

5 **3** **2** **606m²**

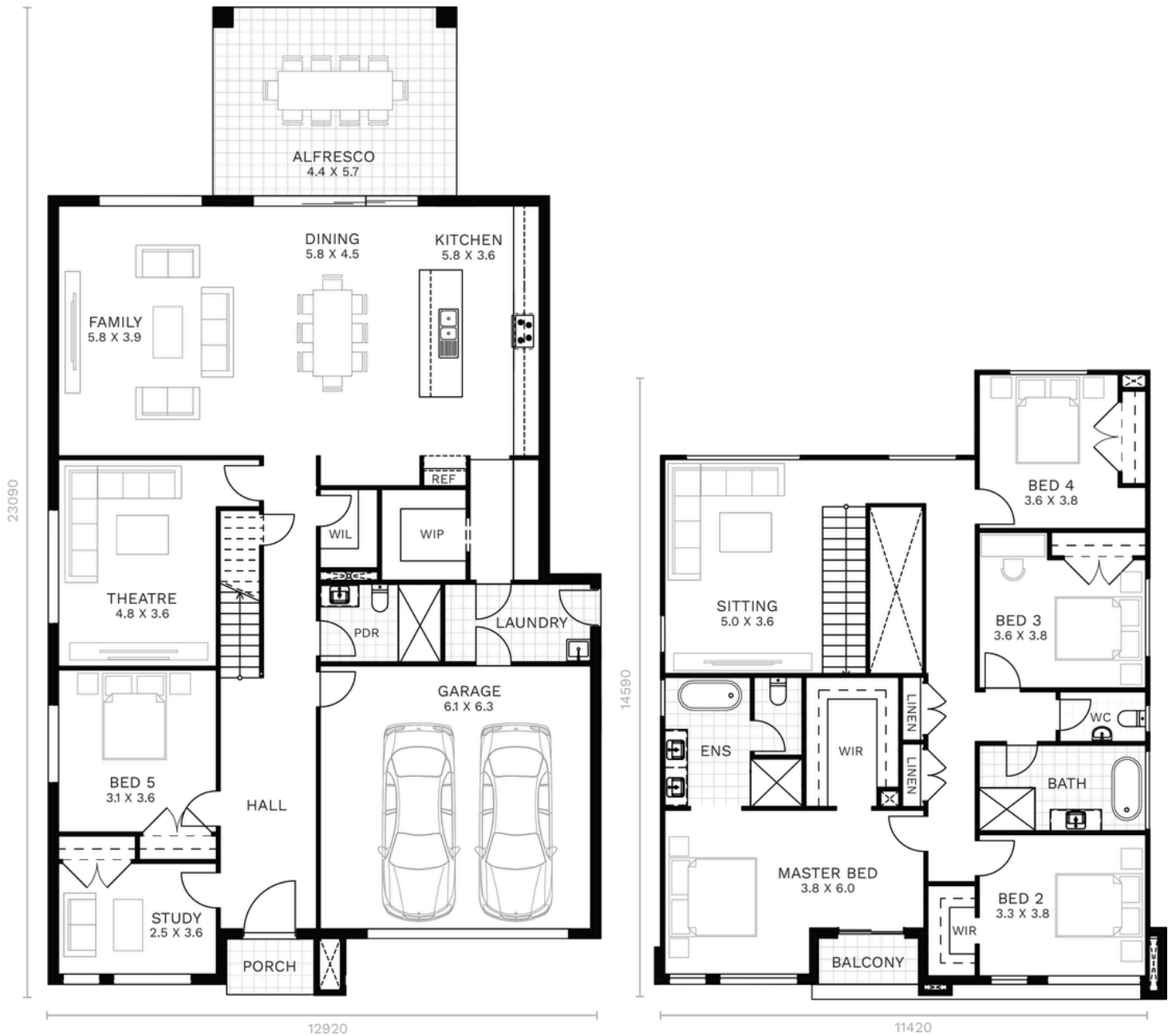
SIGNATURE SERIES
Effortless combination of style and functionality, this home offers a spacious and luxurious five bedroom layout.

Included with your North Homes package:

Luxury Lift Upgrade Pack

- Actron reverse cycle ducted air-conditioning
- Westinghouse 900mm kitchen appliances and 600mm dishwasher
- Polytec Melamine matt joinery, with finger pull and soft close doors and drawers
- 40mm Caesarstone® benchtop to kitchen with overhead cabinets and bulkhead
- Hybrid flooring from Builder's range to living areas and carpet to bedrooms, staircase, and first floor living areas
- 2740mm high ceilings to ground floor
- Floor tiling to alfresco, balcony, and porch as per standard plan
- Downlights to downstairs living areas as per plan
- Full height tiling to bathrooms and ensuites with shower to standard plan
- Laundry fitout soft close doors with base inset laundry sink 45L, Polytec melamine Matt 800mm wide base cabinet, and 20mm stone benchtop, with handles from the builder's range
- Dulux 3-coat paint system
- Flyscreens to all open windows
- Bristle classic roof tiles or Colorbond® as per roof design
- Remote controlled Colorbond® sectional overhead garage door
- Coloured concrete driveway
- Basix allowance
- PLUS MORE...

*Price is based on standard floor plan with standard facade. This is not a fixed price package. Price includes GST. Additional costs will incur with any alterations to the floor plans or facades. Please refer to Comfort inclusions brochure and schedule of inclusions. Additional Site works, bushfire, steps to the home, council conditions and statutory requirements may apply as this is unregistered land. The home has a provisional allowance that may vary based on colour selections and home size to meet 7 star BASIX. *Refer to Luxury Lift Upgrade inclusions brochure for full list of promotional items and T&Cs. Prices may vary when plans are customised from standard, prices may increase from month to month. Prices based on March 2026 review. Floorplan shown in Hamptons facade.



Customise this plan or an alternate plan to suit you and your needs.
Plans may vary slightly to suit the land, please talk to our team.

GROUND FLOOR

FIRST FLOOR

Ground Floor	176.44 sqm
Garage	41.85 sqm
Porch	3.60 sqm
Alfresco	25.14 sqm

First Floor	148.71 sqm
Balcony	3.22 sqm
TOTAL	398.96 sqm 42.94 sq

1800 116 544 | NORTHOMES.COM.AU

Disclaimer: The information contained in this document is for marketing purposes only and does not form part of the contract of sale. Although all efforts have been made to ensure that the information provided is accurate and in accordance with the provisions of the contract of sale, changes may be made during construction and dimensions, areas, fittings, finishes and specifications are subject to change without notice. North Homes retains the right to modify prices at its discretion and without prior notification. The commencement date is contingent upon the timeline of customer, developer, and council meetings, encompassing factors such as land registration, client-requested alterations, developer and council endorsements, as well as the timely acceptance of tender and contract within 7 days, respectively. The indicated prices are subject to compliance with developer, council, and legal mandates and condition of utility services. Adjustments to land dimensions and positioning of utility services, including sewer and stormwater systems, drainage fixtures, Telstra infrastructure, trees, butterfly drains, driveway crossovers, pram ramps, electrical and other easements, or Section 88B instruments, might necessitate revisions to the floor plan or siting arrangements. The terms and conditions of sale as stipulated by North Homes are applicable. For further information, kindly consult with your North Homes consultant. Builder's Licence Number 374999c . Effective from March 2026. Floorplan shown in Hamptons facade.