

# Waterlea

HOUSE & LAND PACKAGE

# \$419,196\*



Facade disclaimer: Façade included, photo may include items not included in the price, consult the builders sales consultant for full list of inclusions.

4  2  2 

Land 350 sqm | House 220.11 sqm

Weston 24 by Oracle Platinum Homes  
Lot 422 Waterlea Estate, Walloon

**ORACLE**  
**PLATINUM HOMES**

### THIS TURNKEY PACKAGE INCLUDES:

Site costs, Driveway, Floor coverings, LED Downlights, Letterbox, Clothesline, NBN ready.

### HOUSE FEATURES:

- Steel Frame & Colorbond Roof
- 2 x Split System Air Conditioning units
- 2440mm Ceiling Height
- Stone Benchtops to Kitchen, Cold Water Tap to Fridge Space
- Rinnai Continuous Hot Water System
- LED Downlights throughout
- Ceiling Fans to Bedrooms & Alfresco, Flyscreens
- Façade as shown
- Feature Entry Front Door
- Turf, Fencing & Gate



For further information please call the Sales Team : James - 0439 900 611 or Sue - 0432 311 250  
Visit the Sales & Information Centre at "The Hangar" 7001 Parkland Drive, Walloon.  
[waterlea.com.au](http://waterlea.com.au)

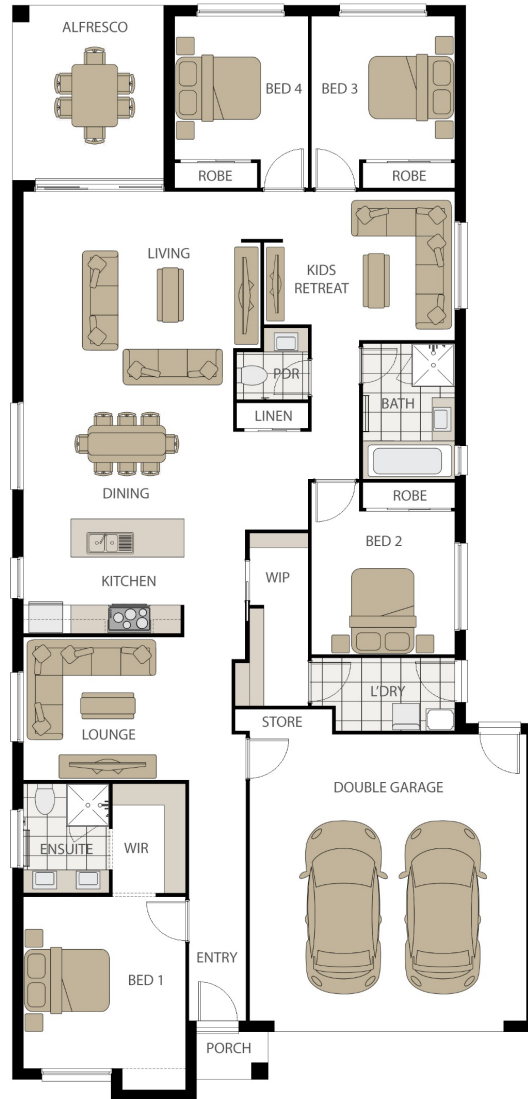


# HOUSE & LAND PACKAGE

# \$419,196\*

Weston 24 by  
Oracle Platinum Homes

Land size: 350 sqm | Home size: 220.11 sqm



\*House and land is sold separately. Buyers must enter into a separate contract with the builder and the land developer. The builder is solely responsible for all matters relating to the building contract and the house. Benchmark Group Property Pty Ltd makes no representations and gives no warranties about the availability, price and inclusions of the builder's product at the time of the enquiry and buyers should make their own inquiries with the builder directly. The advertised package price is general information only and may be subject to change without prior notice. Land is subject to availability. Whilst the information is relevant at the time of insertion of the advised house and land package, the builder and land agent/s are not able to guarantee it's availability at the time of enquiry, however all attempts will be made to keep information current. Prices shown may include rebates for the fulfilment of separate conditions under the land contract, and information provided by the builder may be subject to eligibility criteria and other terms and conditions. Buyers should review each of the land and building contracts carefully and make their own enquiries. It is recommended that buyers obtain independent advice before proceeding. Photographs, illustrations and information are intended to be an aid and are indicative only and are believed to be correct at the time of publication. Benchmark Group Property Pty Ltd reserves the right to withdraw or alter any package at any time without notice at its absolute discretion. Estimated costs for the package are indicative only and other costs and fees are payable, including but not limited to: transfer (also known as stamp duty), settlement/registration fees, legal/conveyancing fees, finance costs, site works, engagement of any consultants, approvals, connection for services and variations. Benchmark Group Property Pty Ltd. Published 09/05/2021 – House: \$236,196 Land: \$181,000 prices correct at publication and are subject to change without notice.

For further information please call the Sales Team : James - 0439 900 611 or Sue - 0432 311 250  
Visit the Sales & Information Centre at "The Hangar" 7001 Parkland Drive, Walloon.  
[waterlea.com.au](http://waterlea.com.au)