

# FOR SALE

11/53 East Parkway, Lightsview

Apartment 11  
Pod 7

2  | 1  | 1 



Lightsview  
APARTMENTS

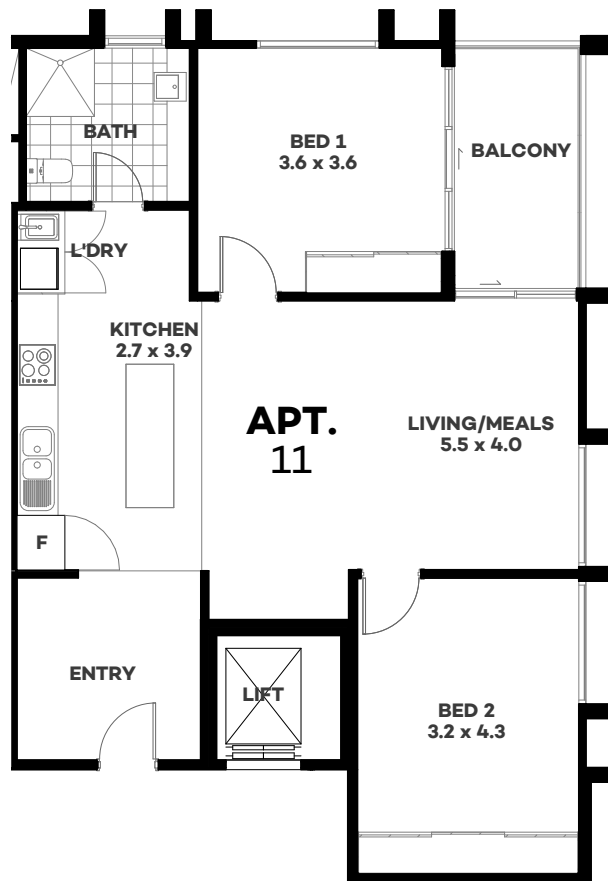
PEET

Peet Estates (SA) Pty Ltd RLA 217 912

Step into Apartment 11 (Pod 7) and you'll instantly be drawn to impressive views, innovative design and of course, its outstanding value for money.

Located in the heart of Lightsview, you're guaranteed to enjoy the linked cycling and walking trails, parks and reserves, tennis facilities and integrated public transport. Our highspeed fibre network means you'll also enjoy state-of-the-art data, phone and TV services from the day you move in.

A Lightsview Apartment not only surrounds you with everything that's fresh and innovative, but truly offers a low maintenance and relaxed lifestyle that really gives you a sense of independence and freedom like nothing you've experienced before. So if you're looking to transform your lifestyle, a Lightsview Apartment may just be the answer.



<b>LIVING (approx.)</b>	<b>84m<sup>2</sup></b>
<b>BALCONY (approx.)</b>	<b>8m<sup>2</sup></b>
<b>TOTAL (approx.)</b>	<b>92m<sup>2</sup></b>

## FEATURES

- Electrical upgrade package included
- Fan to bedroom 2
- Reverse-cycle air conditioning to main bedroom and living area
- Tiles to wet areas and balcony
- Quality carpet to bedrooms
- Lift access, intercom and alarm system
- 3m high ceilings
- Mirrored sliding door wardrobes to bedrooms
- Quality stainless steel kitchen appliances (electric oven, cooktop, retractable range hood and dishwasher)
- High speed fibre optic connection
- Lockable storage cage

This completed apartment is available for inspection. Contact us today.

For more information contact the Lightsview Sales and Information Centre  
155 East Parkway, Lightsview

Open Monday to Friday 9am - 5pm, Saturday and Sunday 12pm - 5pm

8261 1888 | [lightsviewapartments.com.au](http://lightsviewapartments.com.au)

Whilst all care has been taken in the preparation of this material, no responsibility is taken for errors or omissions and details may be subject to change. Intending purchasers should not rely on statements or representations and are advised to make their own enquiries to satisfy themselves in all respects. Images are for illustration purposes only and furniture is excluded.