

On Display.

Casuarina 220 Element Series.



ON DISPLAY: 58 Columbia Drive, Bellbird Park.

The stunning **Casuarina** will encourage you to make use of the ultimate living spaces that will suit your family as it grows. The eye-catching features, vibrant spatial design and layout are a collaboration of style that takes living to new heights.

Full Turn Key Package including:

- + Executive Facade
- + Ceasar stone kitchen bench tops
- + Tiling to main areas
- + Air Conditioning
- + 4 bedroom
- + Spacious kitchen with Butler's pantry
- + Family
- + Dining
- + Lounge
- + Study
- + Exposed Aggregate Driveway
- + Full landscaping and turfing
- + Fencing
- + Alfresco
- + Double garage



DISCLAIMER: Images and photographs may depict fixtures, finishes and features either not supplied by G.J. Gardner Homes or not included in any price stated. For detailed home pricing or to discuss our building time program please talk to a New Homes Consultant. QBCC: 1073307

Casuarina 220

4  2  2 



**Give us a call or drop
in for a chat today.**

OFFICE: Suite 113, World Knowledge Centre,
Education City, 37 Sinnathamby Boulevard,
Springfield Central

Call us on 3470 5666, 0427 597 076
or visit us online at gjgardner.com.au

 Review us!

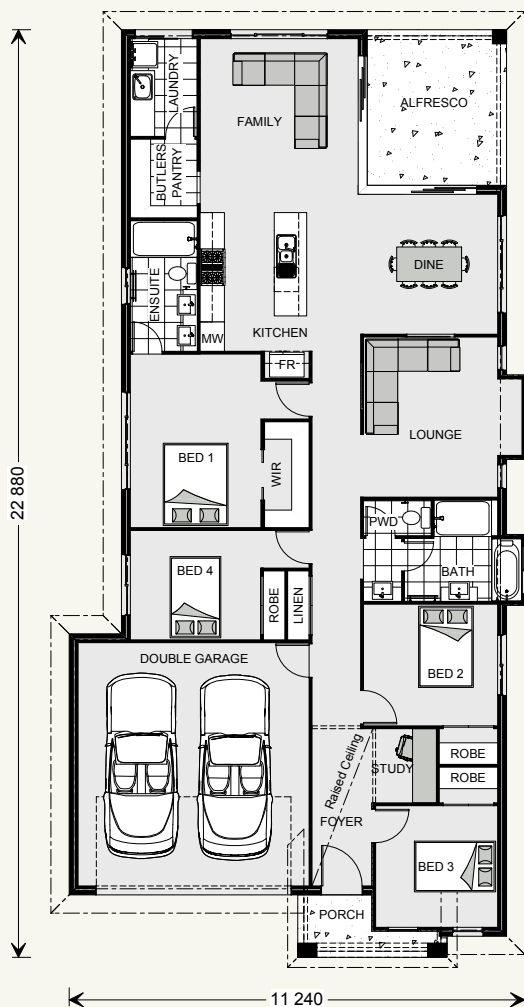
 Follow us!

Welcome **home.**

G.J. Gardner. HOMES



ON DISPLAY: 58 Columbia Drive, Bellbird Park.



Casuarina 220

4 2 2

FLOOR AREAS

Internal:	165.6 m ²
Garage:	37.1 m ²
Alfresco:	13.2 m ²
Porch:	4.0 m ²
TOTAL:	219.9m²

Give us a call or drop in for a chat today.

OFFICE: Suite 113, World Knowledge Centre, Education City, 37 Sinnathamby Boulevard, Springfield Central

Call us on 3470 5666, 0427 597 076 or visit us online at gigardner.com.au

Review us! Follow us!

DISCLAIMER: Images and photographs may depict fixtures, finishes and features either not supplied by G.J. Gardner Homes or not included in any price stated. For detailed home pricing or to discuss our building time program please talk to a New Homes Consultant. QBCC: 1073307

Welcome home.

G.J. Gardner. HOMES