

# DISPLAY HOME FOR SALE



**\$449,000**  
FULLY FURNISHED  
5% LEASE BACK  
GUARANTEE\*

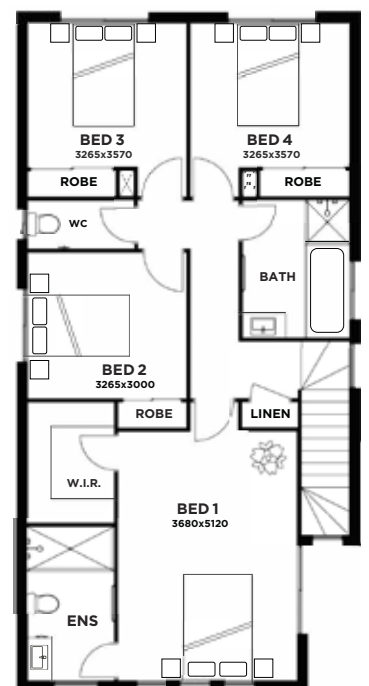
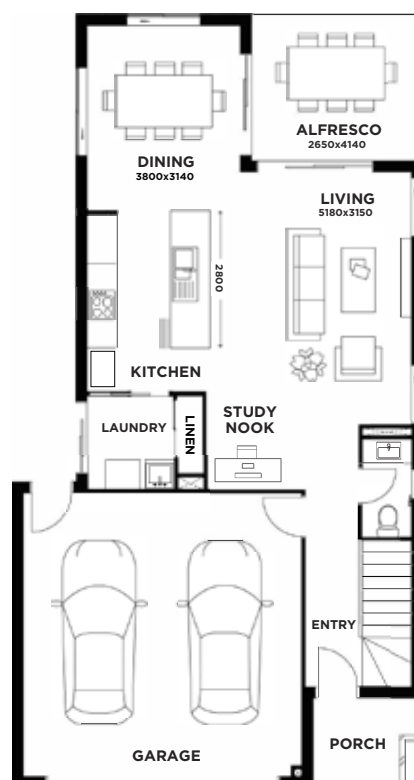
LOT 184 WOODLINKS  
RESI DESIGN HOMES  
"THE ISLA"

4 2 2.5

Total Home Area 213.28m<sup>2</sup>

Block Size 320m<sup>2</sup>

[woodlinks.com.au](http://woodlinks.com.au)



 **Village**

# WOODLINKS VILLAGE DISPLAY HOME

**\$449,000** FULLY FURNISHED  
**5% LEASE BACK GUARANTEE\***

**The commanding presence of this two-storey home, built by Resi Design Homes, offers everything that a growing family needs.**

Featuring four spacious bedrooms, all located upstairs, this home features open planned living areas, a great sized kitchen, family and dining area with the addition of an alfresco area and impressive backyard. There truly is plenty of space for everyone. This home is situated a low maintenance 320m<sup>2</sup> block overlooking the Goodna Creek Nature Reserve.

Woodlinks Village, developed by Village Building Co, is a masterplanned community that brings together affordable quality homes, green open spaces and easy access to established local amenities. Get in touch with Rebecca Delay today on **0421 078 630** or [rdelay@villagebuilding.com.au](mailto:rdelay@villagebuilding.com.au) to find out more about this exceptional opportunity.



\*5% return based on advertised price, calculated as an annual yield rate and paid during the term of the lease. All statutory outgoings and utilities (excluding land tax) are paid for by Village Building Co during the term of the lease, including council rates, insurance, gas and electricity. Minimum 12 month lease applies, with two six month options.



## Location

- 8km to Springfield CBD
- 12km to Ipswich CBD
- 30km to Brisbane CBD

## Connectivity

- Opposite WoodLinks State School
- Opposite Woolworths shops
- 5 minutes to Redbank Plaza Shopping Centre and Cinema Complex
- 5 minutes from Redbank Train Station

## Community

- Predominately first home buyers, made up of couples and young families.

## Infrastructure

- Ongoing public and private investment will continue to drive residential demand in the area.

## Employment

- Ipswich is set to have the strongest job growth in South East Queensland over the 20 years to 2030
- Urbis.